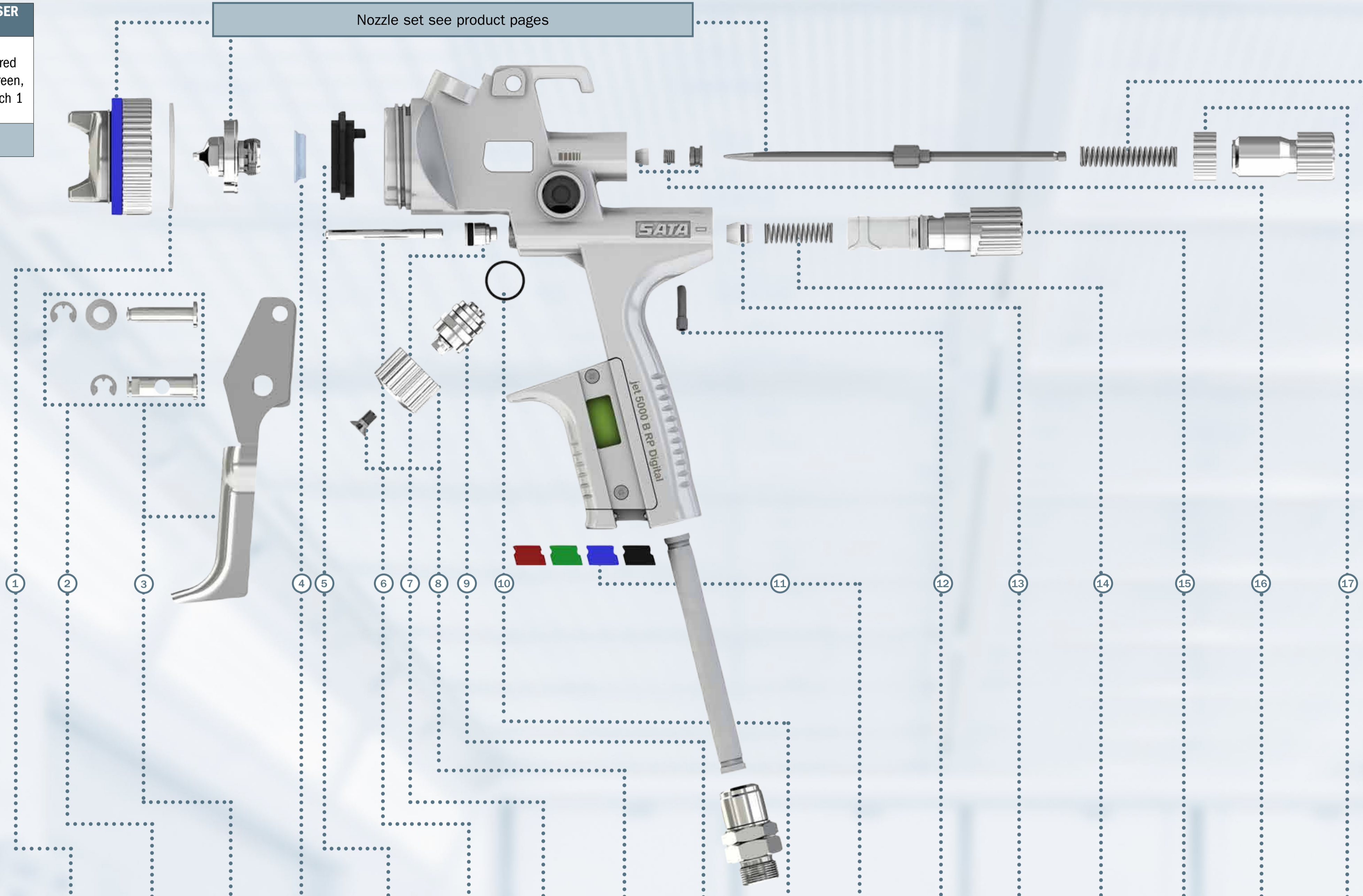


Spare parts for SATA spray guns with gravity flow cup



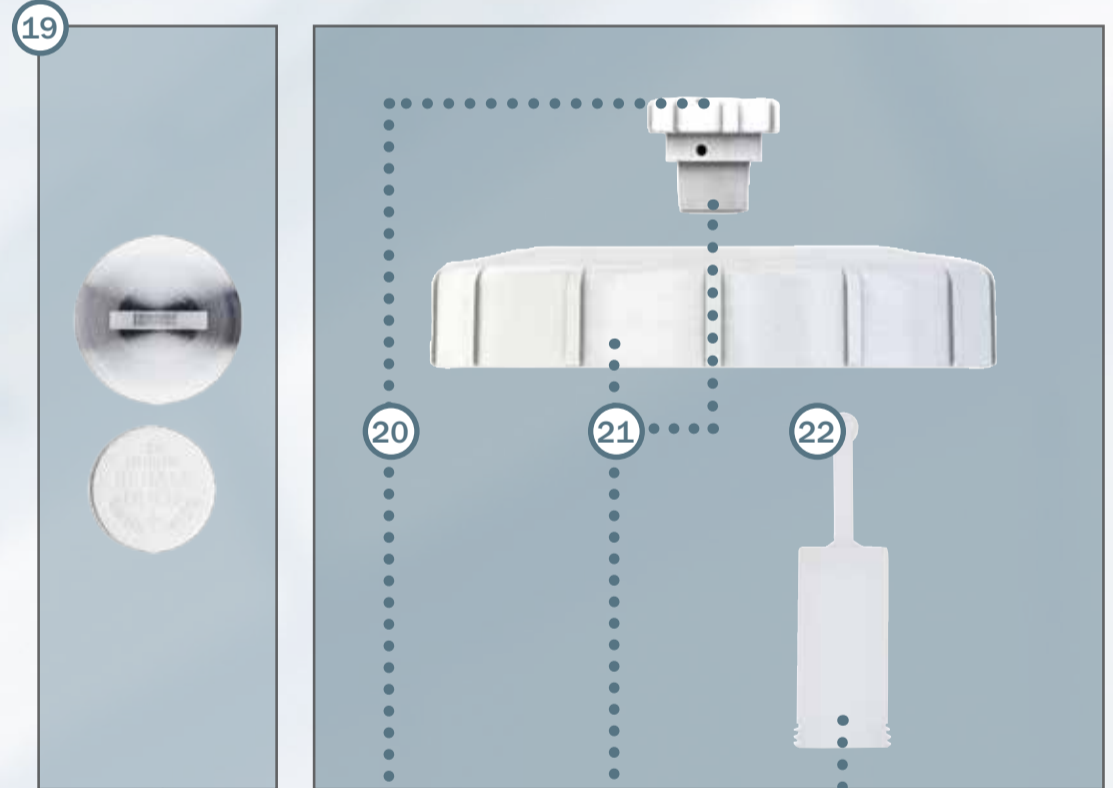
German Engineering

SATAjet 5000 B PHASER
 Art. No./Descr.
 1006669
 Kit consisting of coloured marking rings (blue, green, black, packing unit each 1 piece)
 1006734
 Fixing clip for trigger



Air connection piece						
Spray gun	Standard PHASER	Standard	Standard swivel joint	DIGITAL	DIGITAL swivel joint with seal retainer and sleeve	Seal retainer with sleeve*
5000 B PHASER	1006932	-	-	-	-	-
5000 B	-	134098	19745	211490	211516	211441
4000 B	-	-	-	166116	203422	165985
100 B	-	-	-	-	-	-
1000 B	-	-	-	-	-	-
minijet 3000 B	-	133983	16162	-	-	-
minijet 4400 B	-	-	-	-	-	-

* only for DIGITAL with swivel joint



Gun type	Description																						Description		
	1	2	3	4	5	6	7	8	9	10	11	12	13	14	15	16	17	18	19	20	21	22			
5000 B PHASER	Seal ring	Trigger sleeve kit	Trigger kit	Seal element fluid tip	Air distribution ring	Air piston rod	Seal retainer	Control knob	Spindle with seal	Spindle seal	CCS clips	Locking screw	Air piston head	Pressure spring air piston	Air micrometer (air flow control knob)	Paint needle packing	Material flow control	Pressure spring paint needle	Battery kit	Anti-drip device	Screw-on lid	Strainer 300µm			
	211508	-	1006643		211425			1006768	213025		211409	211391			1006742		1006750		-				5000 B PHASER		
	5000 B	211458	211433			86843		211482							211466		211474		213769			3988 (10x)	5000 B		
	4000 B	172429	166009	165977	140582	165951	133942	166033	165944	133934	165928			133991	133959**	166017	15438	166025	133959**	165993	1826	49395	76018 (100x)	4000 B	
	100 B												133967										76026 (500x)	100 B	
	1000 B		133926	130492		143230	91959	140574	89771			6395				139964		139188							1000 B
	minijet 3000 B												64972	44826		125187	79905	125146***			95489	95448			minijet 3000 B
minijet 4400 B	200907	199463	198473	199455	197467	198408	199414	200162	198549	199471	197418	199430	199448	201467**	198523	199414	199406			197558	199075	see above		minijet 4400 B	

* screw #44735 to be ordered separately

** in a set

*** counter nut #44644 to be ordered separately