

Vacuum and Pressure Switches VSi

Measuring range from -1 bar to 10 bar



Vacuum and Pressure Switches VSi

Suitability for Industry Specific Applications

Applications

- Electronic vacuum and pressure switch with IO-Link interface for measuring and monitoring vacuum and overpressure in automation and handling systems
- Input and output of parameters via the controller
- Sensor unit can be positioned independently from the control and indicator display in the system
- Compact switch for installation directly on the suction cup, particularly in decentralized vacuum systems
- Setting and programming of the vacuum and pressure switch even at points in the process that are difficult to work on manually
- Output of device data such as type or operating instructions via smartphone, even with variants without display

Design

- Switch with compact units in two designs: without display or with integrated display
- Robust fiberglass reinforced plastic housing
- Installation via stainless steel vacuum, compressed air connection and with optional additional mounting bracket
- M8-4 pin or M12-4 pin connection plug
- Mode and switching point display using LEDs that are visible from all sides

Our Highlights...

- Electronic vacuum and pressure switch, available with and without display
- Output and configuration via smartphone using NFC technology
- Communication in all standard fieldbus systems via IO-Link interface

Your Benefits...

- Precise measurement and output of digital signals
- Simple access to service and maintenance information; mobile display of detailed error messages
- Input and output of all relevant process data via the controller



Designation Code Vacuum and Pressure Switches VSi



1 – Abbreviated designation

Code	Version
VSi	VSi (IO-Link)

2 – Measuring range

Code	Measuring range in bar
V	-1 to 0
VP8	-1 to 8
P10	0 to 10

3 – Display

Code	Type
D	With integrated display

4 – Connection electrical

Code	Connection
M8-4	Male connect M8, 4-pole
M12-4	Male connect M12, 4-pole

Vacuum and pressure switch VSi is delivered as a ready-to-connect product (without connection cable).

The product consists of:

- Vacuum and pressure switch of type VSi - available as vacuum version, pressure version or combined version without display or with integrated display

Available accessories: connection cable, mounting bracket

- Schmalz – The Company
- Vacuum Suction Cups
- Special Grippers
- Gripping Systems
- Clamping Systems
- Mounting Elements
- Vacuum Generators
- Valve Technology
- Switches and Monitoring
- Filters and Connections
- Services
- Contact
- Glossary
- Index of Products

Vacuum and Pressure Switches VSi

Measuring range from -1 bar to 10 bar



Ordering Data Vacuum and Pressure Switches VSi

Type	Part no.
VSi V M8-4	10.06.02.00567
VSi V D M8-4	10.06.02.00577
VSi VP8 M8-4	10.06.02.00569
VSi VP8 D M8-4	10.06.02.00579
VSi P10 M8-4	10.06.02.00568
VSi P10 D M8-4	10.06.02.00578
VSi V M12-4	10.06.02.00570
VSi V D M12-4	10.06.02.00580
VSi VP8 M12-4	10.06.02.00572
VSi VP8 D M12-4	10.06.02.00582
VSi P10 M12-4	10.06.02.00571
VSi P10 D M12-4	10.06.02.00581



Ordering Data Accessories Vacuum and Pressure Switches VSi

Type	Part no.
Connection cable, M8 4-pole, 5 m, PUR, straight	ASK B-M8-4 5000 K-4P
Connection cable, M12 4-pole, 5 m, PUR, straight	ASK B-M12-4 5000 K-4P
Mounting bracket	BEF-WIN 18x22x59 1 VS



Technical Data Vacuum and Pressure Switches VSi

Type	Measured medium	Measuring range [bar]	Max. overpressure safety [bar]	Repeatability	Switching capacity max. [mA]	Hysteresis	Inputs/outputs
VSi V M8-4	Non-aggressive gases; dry, oil-free air	-1.0...0.0	8	± 3% of full-scale value	100	Adjustable	2 digital
VSi VP8 M8-4	Non-aggressive gases; dry, oil-free air	-1.0...8.0	12	± 3% of full-scale value	100	Adjustable	2 digital
VSi P10 M8-4	Non-aggressive gases; dry, oil-free air	0.0...10.0	15	± 3% of full-scale value	100	Adjustable	2 digital
VSi V M12-4	Non-aggressive gases; dry, oil-free air	-1.0...0.0	8	± 3% of full-scale value	100	Adjustable	2 digital
VSi VP8 M12-4	Non-aggressive gases; dry, oil-free air	-1.0...8.0	12	± 3% of full-scale value	100	Adjustable	2 digital
VSi P10 M12-4	Non-aggressive gases; dry, oil-free air	0.0...10.0	15	± 3% of full-scale value	100	Adjustable	2 digital

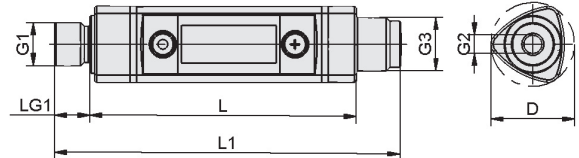
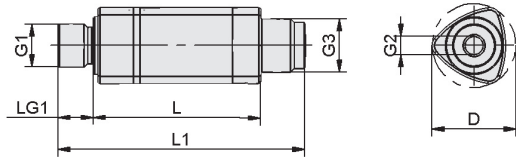
Type	Indication	Electrical connection	Connection	Voltage	Current consumption [mA]	Protection type IP	Temperature influence	Operating temperature [°C]	Weight [g]
VSi V M8-4	LED	Male connect M8, 4 pole	G1/8"-M + M5-F	10-30V DC	35	65	± 3% of full-scale value	0 ... 50	12
VSi VP8 M8-4	LED	Male connect M8, 4 pole	G1/8"-M + M5-F	10-30V DC	35	65	± 3% of full-scale value	0 ... 50	12
VSi P10 M8-4	LED	Male connect M8, 4 pole	G1/8"-M + M5-F	10-30V DC	35	65	± 3% of full-scale value	0 ... 50	12
VSi V M12-4	LED	Male connect M12, 4 pol	G1/8"-M + M5-F	10-30V DC	35	65	± 3% of full-scale value	0 ... 50	12
VSi VP8 M12-4	LED	Male connect M12, 4 pol	G1/8"-M + M5-F	10-30V DC	35	65	± 3% of full-scale value	0 ... 50	12
VSi P10 M12-4	LED	Male connect M12, 4 pol	G1/8"-M + M5-F	10-30V DC	35	65	± 3% of full-scale value	0 ... 50	12

Vacuum and Pressure Switches VSi

Measuring range from -1 bar to 10 bar



Design Data Vacuum and Pressure Switches VSi



VSi

VSi-D

Type	D [mm]	G1	G2	G3	L [mm]	L1 [mm]	LG1 [mm]
VSi V M8-4	20	G1/8"-M	M5-F	M8x1-M	38	55	8
VSi V D M8-4	20	G1/8"-M	M5-F	M8x1-M	61	78	8
VSi VP8 M8-4	20	G1/8"-M	M5-F	M8x1-M	38	55	8
VSi VP8 D M8-4	20	G1/8"-M	M5-F	M8x1-M	61	78	8
VSi P10 M8-4	20	G1/8"-M	M5-F	M8x1-M	38	55	8
VSi P10 D M8-4	20	G1/8"-M	M5-F	M8x1-M	61	78	8
VSi V M12-4	20	G1/8"-M	M5-F	M12x1-M	38	56	8
VSi V D M12-4	20	G1/8"-M	M5-F	M12x1-M	61	79	8
VSi VP8 M12-4	20	G1/8"-M	M5-F	M12x1-M	38	56	8
VSi VP8 D M12-4	20	G1/8"-M	M5-F	M12x1-M	61	79	8
VSi P10 M12-4	20	G1/8"-M	M5-F	M12x1-M	38	56	8
VSi P10 D M12-4	20	G1/8"-M	M5-F	M12x1-M	61	79	8

Schmalz – The Company
 Vacuum Suction Cups
 Special Grippers
 Gripping Systems
 Clamping Systems
 Mounting Elements
 Vacuum Generators
 Valve Technology
 Switches and Monitoring
 Filters and Connections
 Services
 Contact
 Glossary
 Index of Products