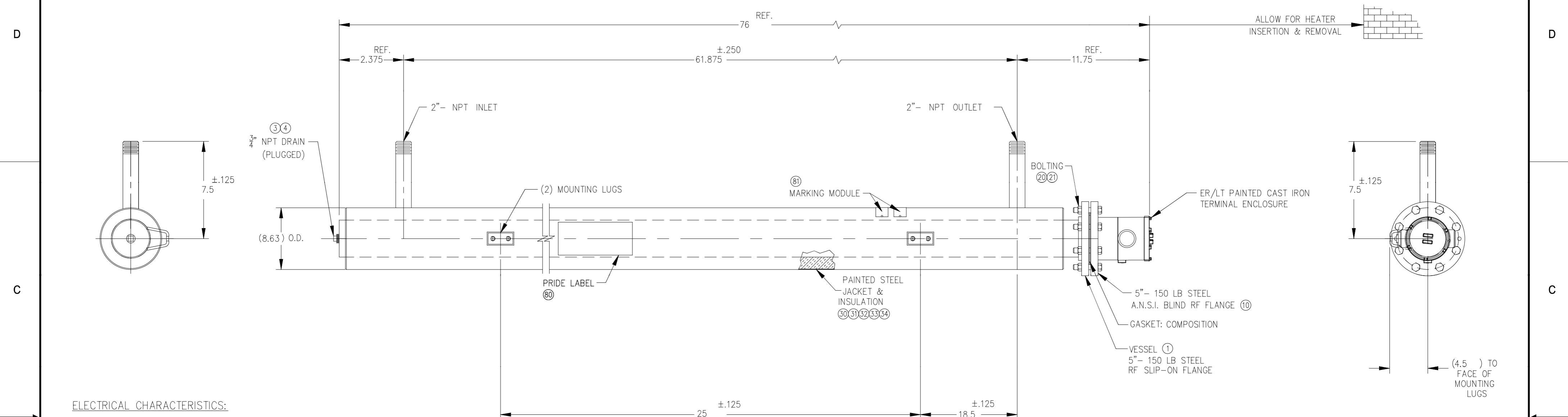


This drawing was created from input data of the Chromalox configurator. Revisions made to the drawing may need to be run back through the configurator.

CIRCULATION HEATER MOUNTING POSITION: VERTICAL - TERMINAL BOX UP

ZONE	REV	DESCRIPTION	REVISIONS	DATE	DWN	CHKR	ENGR	APVD



ELECTRICAL CHARACTERISTICS:

VOLTS: 480 KILOWATTS: 15  
 PHASE: 3PH AMPS PER CIRCUIT: 18  
 NUMBER OF CIRCUITS: 1

THIRD PARTY CERTIFICATIONS:

NONE  
 CLASS 1 DIV 1 & CLASS 2 DIV 1  
 T4 (275°F/135°C)

PHYSICAL CHARACTERISTICS:

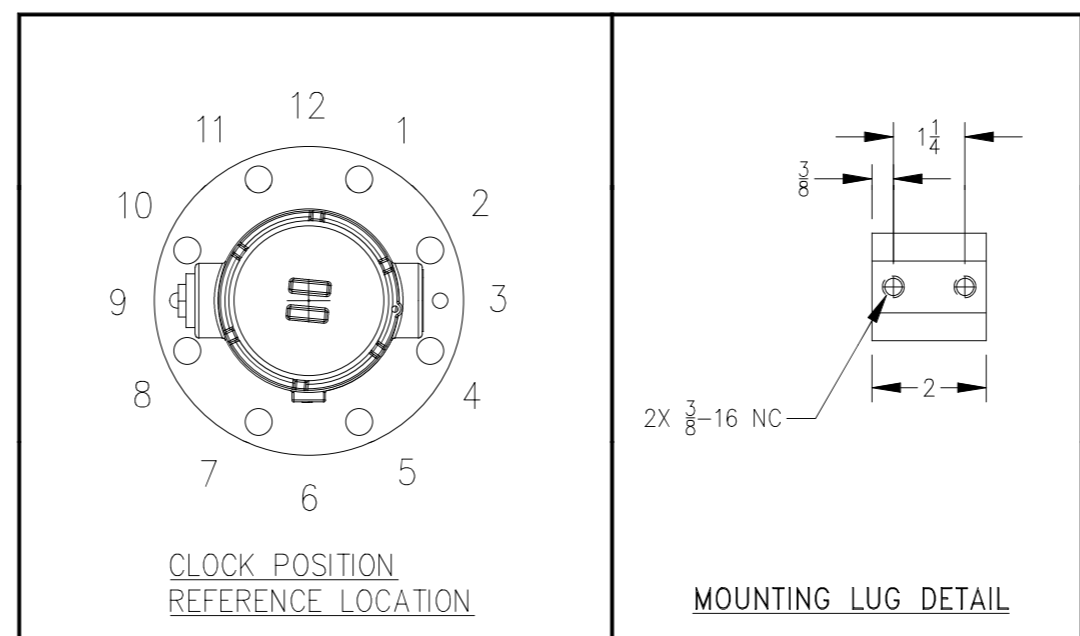
NUMBER OF HEATING ELEMENTS: 6  
 ELEMENT MATERIAL: STEEL  
 ELEMENT WATT DENSITY (W/IN<sup>2</sup>): 14  
 TERMINATION SEAL: CONFORMAL COATING OVER MICA

INCLUDED OPTIONS:

BUNDLE TREATMENT: NONE  
 THERMOSTAT: AR 60-250°F (15-121°C)

ENTRANCE WIRING:

OPENING NUMBER 1: OPENING NUMBER 2:  
 CLOCK POSITION: 3 CLOCK POSITION: 9  
 SIZE: 1 1/2" NPT SIZE: 1 1/2" NPT



99 INSTRUCTION SHEET

UNLESS OTHERWISE SPECIFIED, DIMENSIONS ARE IN INCHES. TOLERANCES ARE: FRACTIONS DECIMALS ANGLES ±1/16 .XX ±0.01 ±2° .XXX ±0.005	CONTRACT NO		<b>Chromalox</b> PRECISION HEAT AND CONTROL Ogden, Utah 84404 www.chromalox.com
	USED ON	DATE	
MATERIALS	APPROVALS	DATE	CIRCULATION HEATER NWH0-6-015P-E2XX 480V 1-3PH 15kW 5"-150# W/2"-MNPT 1/0" STEEL CONST.
FINISH	DWN AUTODRAW	04/05/12	
THIS DRAWING AND THE SUBJECT MATTER SHOWN HEREON IS CONSIDERED CONFIDENTIAL AND MAY BE PROPRIETARY. UNAUTHORIZED DISCLOSURE TO OTHER PARTIES IS EXPRESSLY FORBIDDEN.	CHKR LAQ	04/05/12	SIZE CODE IDENT NO DRAWING NO D 07131 052-146761-134 0
	ENGR LAQ	04/05/12	
	APVD LAQ	04/05/12	SCALE NONE DO NOT SCALE DRAWING SHEET 1 OF 1
	DWO	CO#	
CAD NO			